

Leadership

Deputy Chief Executive & Director  
for Families and Communities

AD Children's Social Care  
1FTE DSDL

AD Education Strategy and  
Improvement  
1FTE G16

AD Children's Wellbeing  
& Partnerships  
1FTE G16

AD Culture &  
Communities

Head of District  
Strategy & Delivery  
1FTE G15

Head of Children in our  
Care & Care Leavers  
1FTE G15

Head of Access to Learning  
Inclusion & Improvement  
1FTE G15

Senior Partnership &  
Placement Manager  
1FTE G14

Head of Performance,  
QA & Engagement  
1FTE G14

District Operational  
Leads  
8FTE G14

Together for Children  
1FTE G15

Head of SEND  
1FTE G15

Senior Partnership  
Commissioning Manager  
5FTE G13

Interim Business  
Support  
1FTE G13

Head of Access to Services  
& Family Support  
1FTE G14

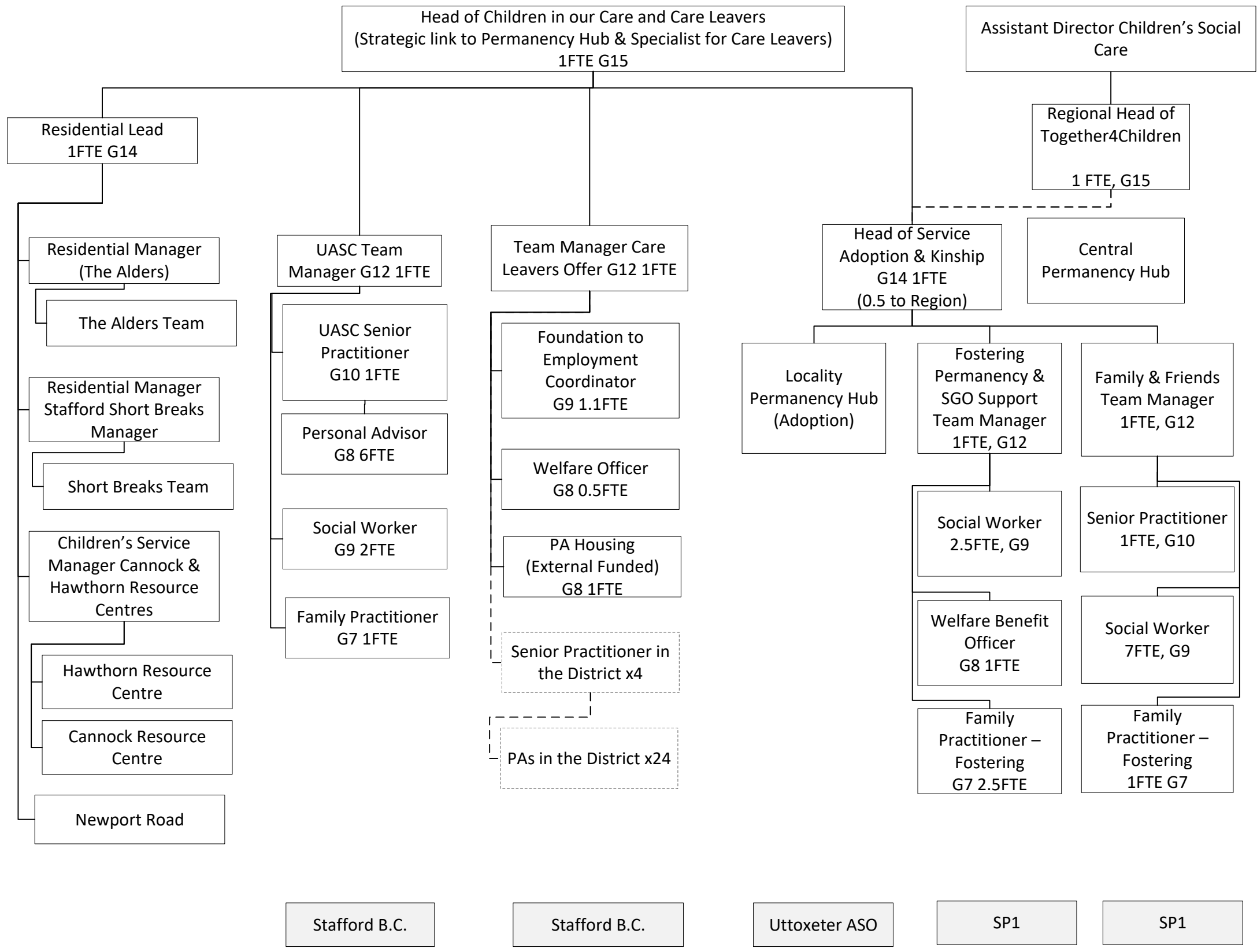
Virtual School Head  
Teacher  
1FTE (Sol)

Partnership Boards  
Manager  
1FTE G12

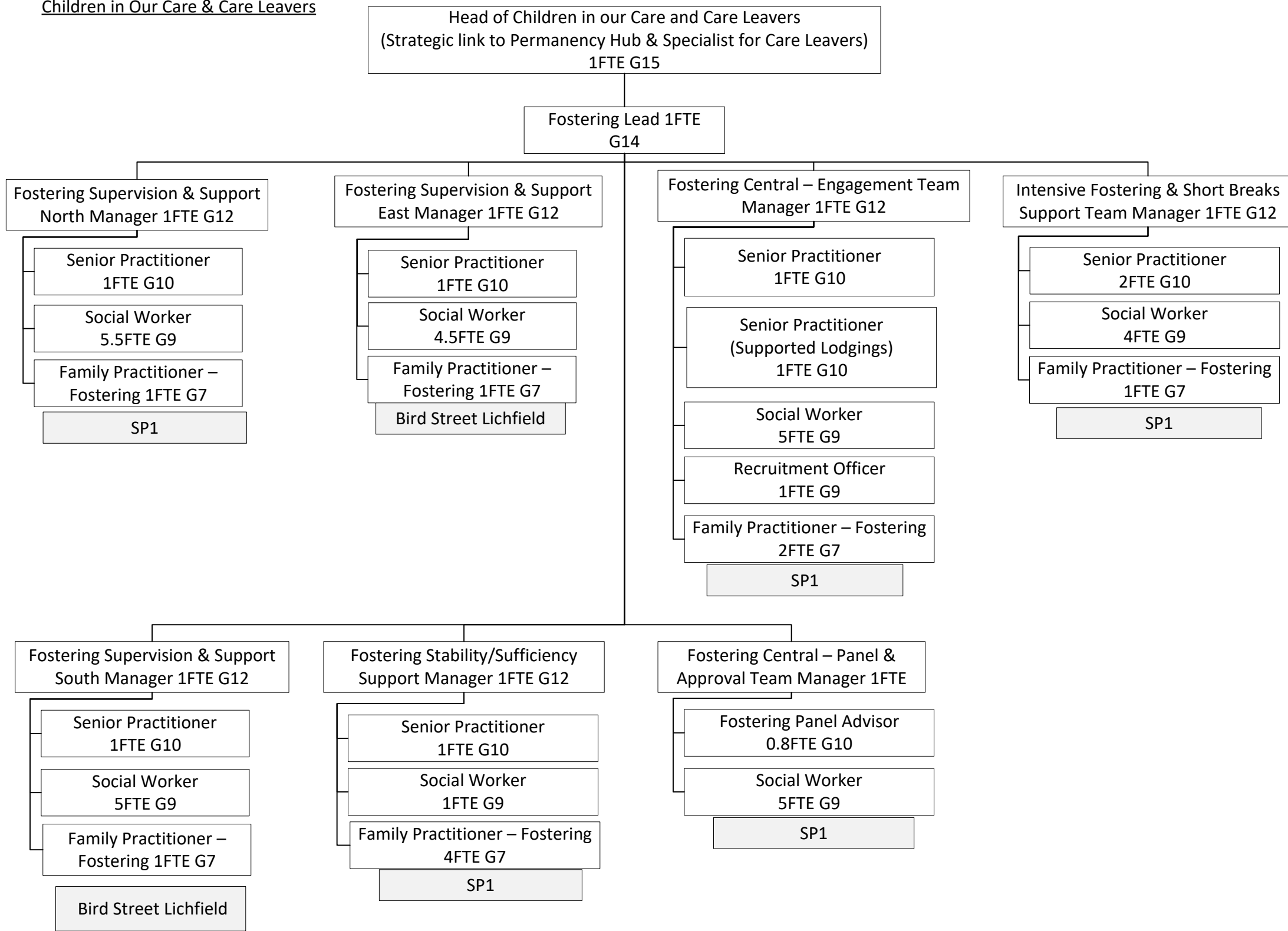
Principal Social Worker  
& Practice Excellence  
1FTE G14

Head of Futures Matters  
1FTE G14

Children in Our Care & Care Leavers



Children in Our Care & Care Leavers



Access to Services & Family Support

Head of Access to Services & Family Support  
1FTE G14

Team Manager – Children’s  
Services, Front Door  
2FTE G12

EDS Team Manager  
1.1FTE G12

Risk Management  
Coordinator  
1FTE G11

Disability Lead  
G13 1FTE

Consultant Social Worker  
17FTE G10

EDS Shift Lead  
6.5FTE G10

Senior Practitioner  
LADO Officer  
2FTE G10

OT Team Manager 1FTE G11

Duty and Advice Support  
Worker 6FTE G6

Call Taker  
5FTE G6

Standby Worker  
100+FTE (casuals)

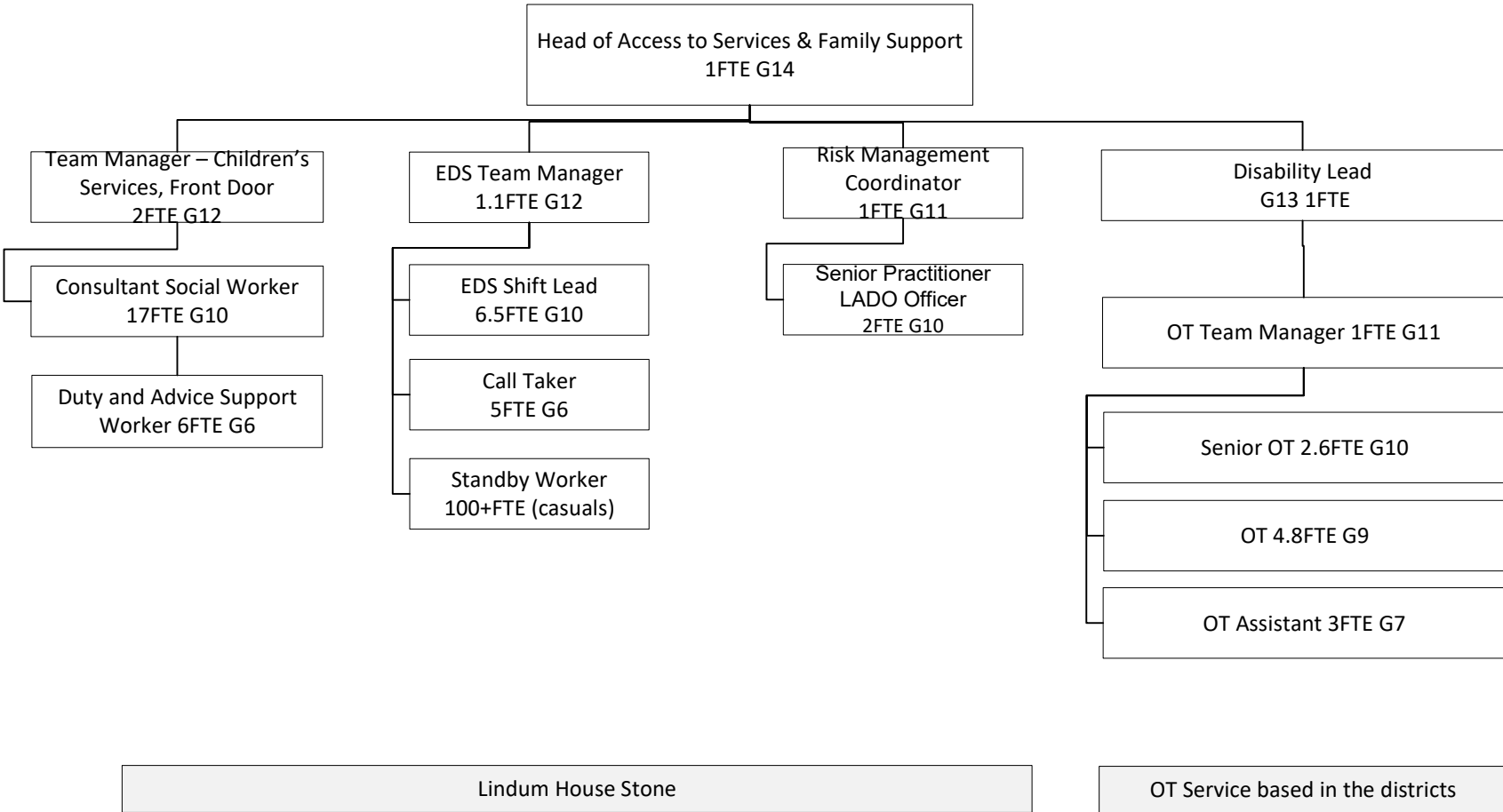
Senior OT 2.6FTE G10

OT 4.8FTE G9

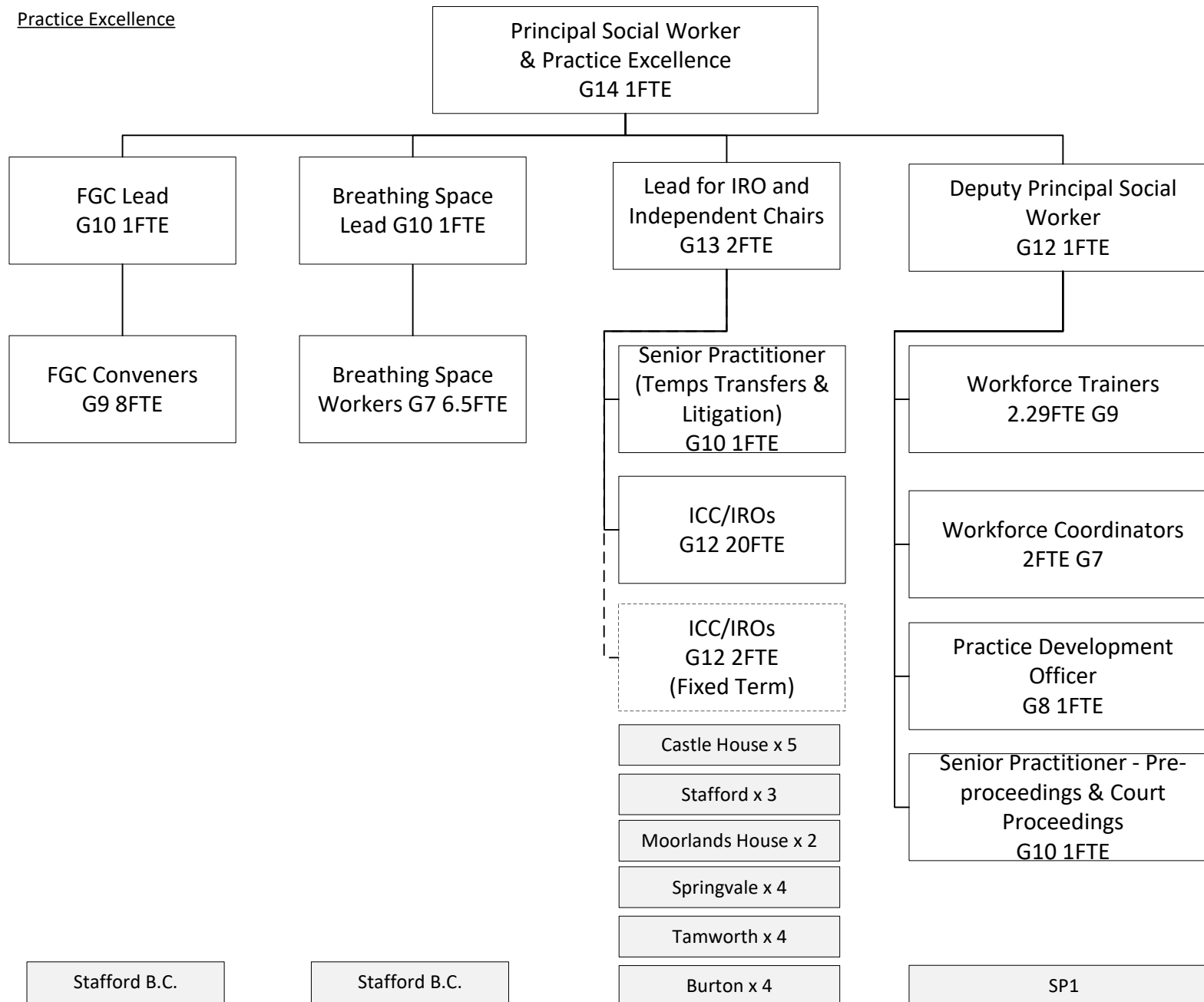
OT Assistant 3FTE G7

Lindum House Stone

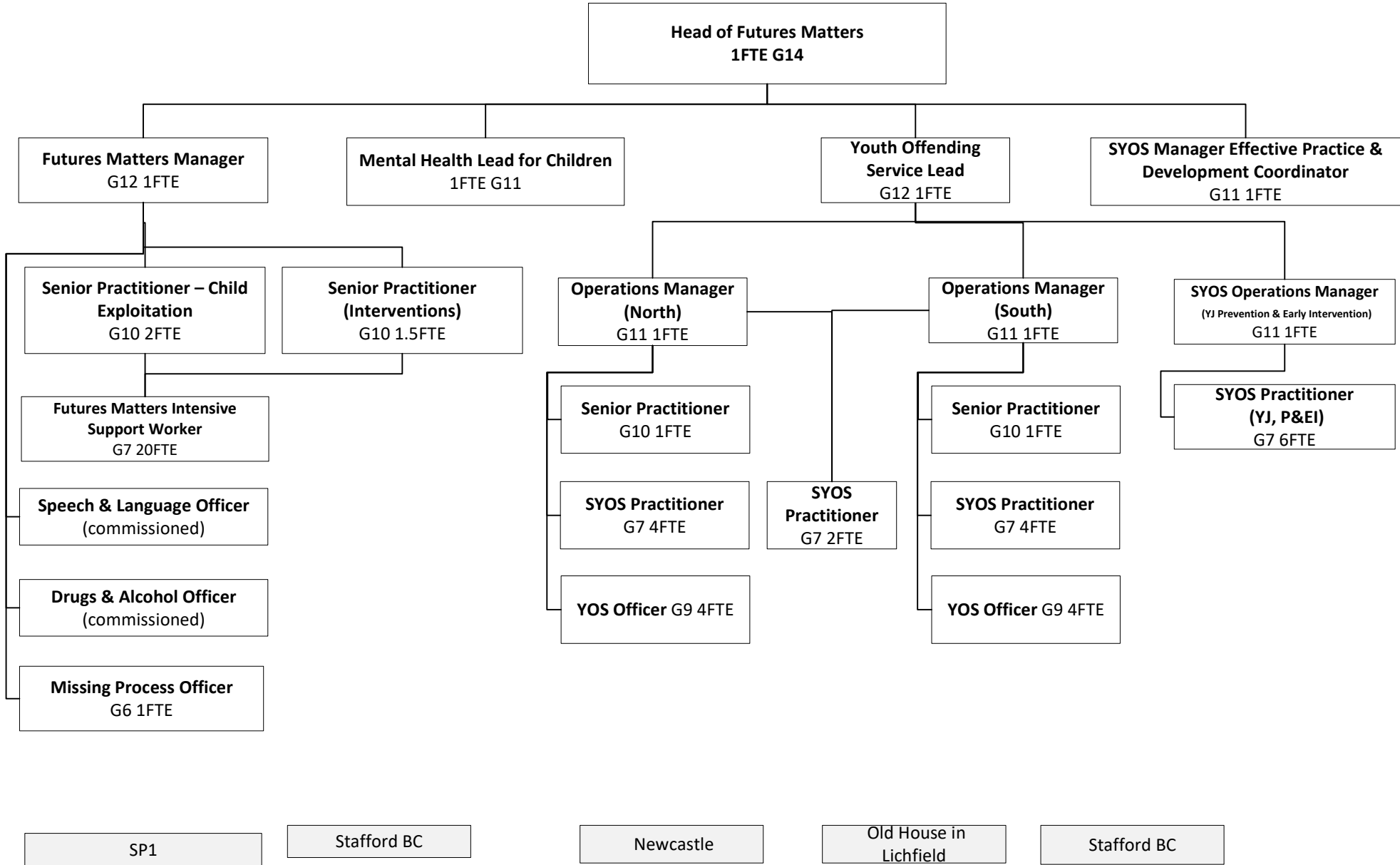
OT Service based in the districts



Practice Excellence

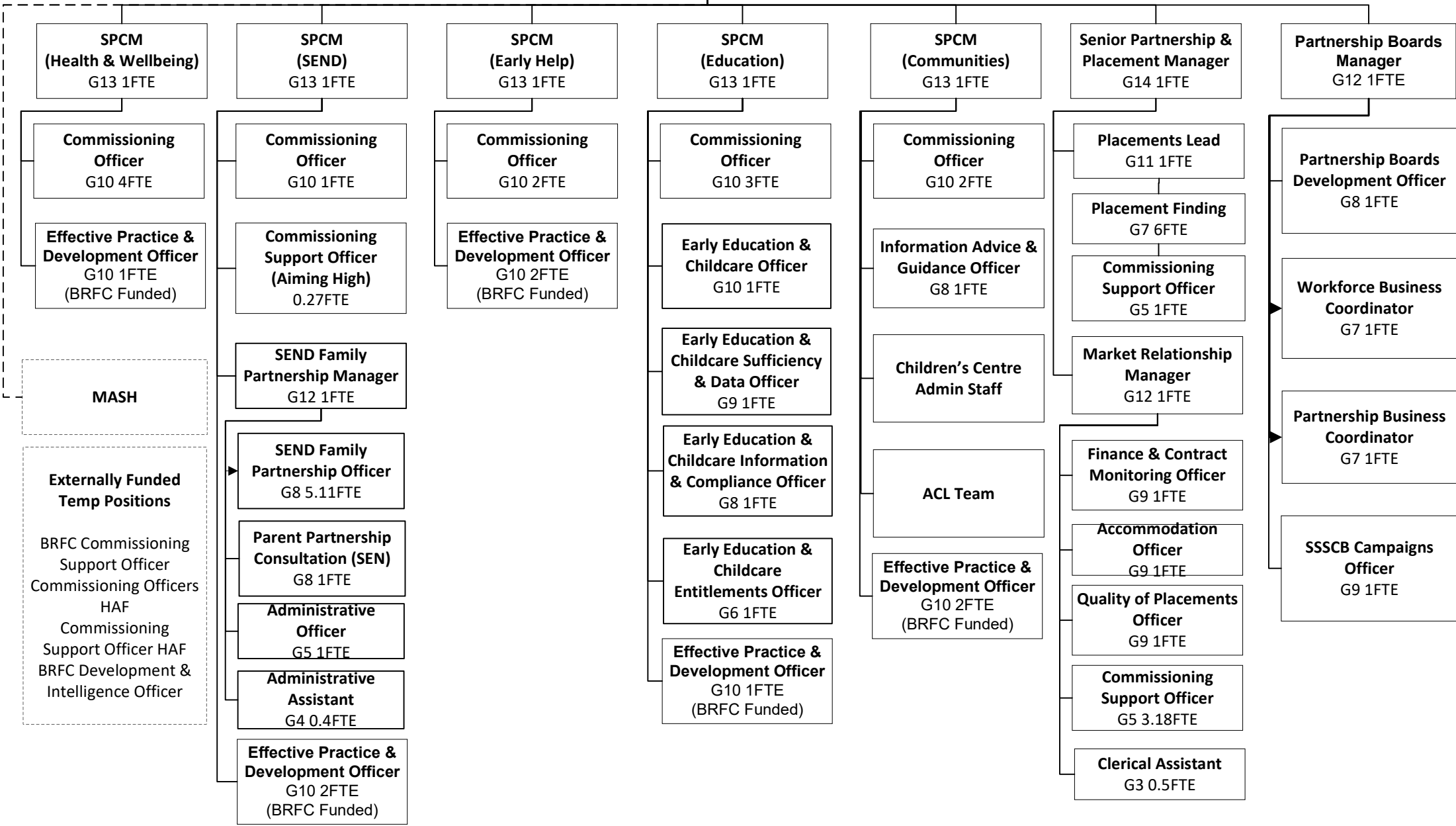


Futures Matters



Commissioning

**AD Children's Wellbeing & Partnerships**  
G16 1FTE



Principal Social Worker  
& Practice Excellence

**Head of Performance, QA  
& Engagement**  
G14 1FTE

**Quality Assurance &  
Performance Lead**  
G12 0.8FTE

**Interim Business  
Support Lead**  
G13 1FTE

**Business Planning &  
Engagement Lead**  
G12 1FTE

**Projects &  
Improvement  
Manager**  
G10 0.81FTE

**Projects &  
Improvement  
Manager  
(12M FTC BRCF  
funded)**  
G10 1FTE

**Quality Assurance  
Manager**  
G10 1FTE

**Intelligence &  
Analysis Manager**  
G10 1FTE

**Intelligence &  
Analysis Manager**  
G10 1FTE

**Care Director  
Development  
and Delivery  
Lead**  
G10 0.8FTE

**Access to Personal  
Information  
Manager**  
G10 0.68FTE

**Voice & Engagement  
Manager**  
G10 0.68FTE

**Quality Assurance  
Officer**  
G8 3.5FTE

**Intelligence &  
Analysis Officer**  
G8 2FTE

**Intelligence &  
Analysis Officer**  
G8 2FTE

**Development,  
Support &  
Training Officer**  
1FTE G9

**Senior Access to  
Personal Information  
Officer**  
G9 1.41FTE

**Consultation &  
Engagement Co-  
ordinator**  
G7 2.5FTE

**Intelligence &  
Analysis Assistant**  
G6 1.5FTE

**Intelligence &  
Analysis Assistant**  
G6 1.5FTE

**Development,  
Support &  
Training  
Assistant**  
1.8FTE G5

**Access to Personal  
Information Officer**  
G6 3.81FTE

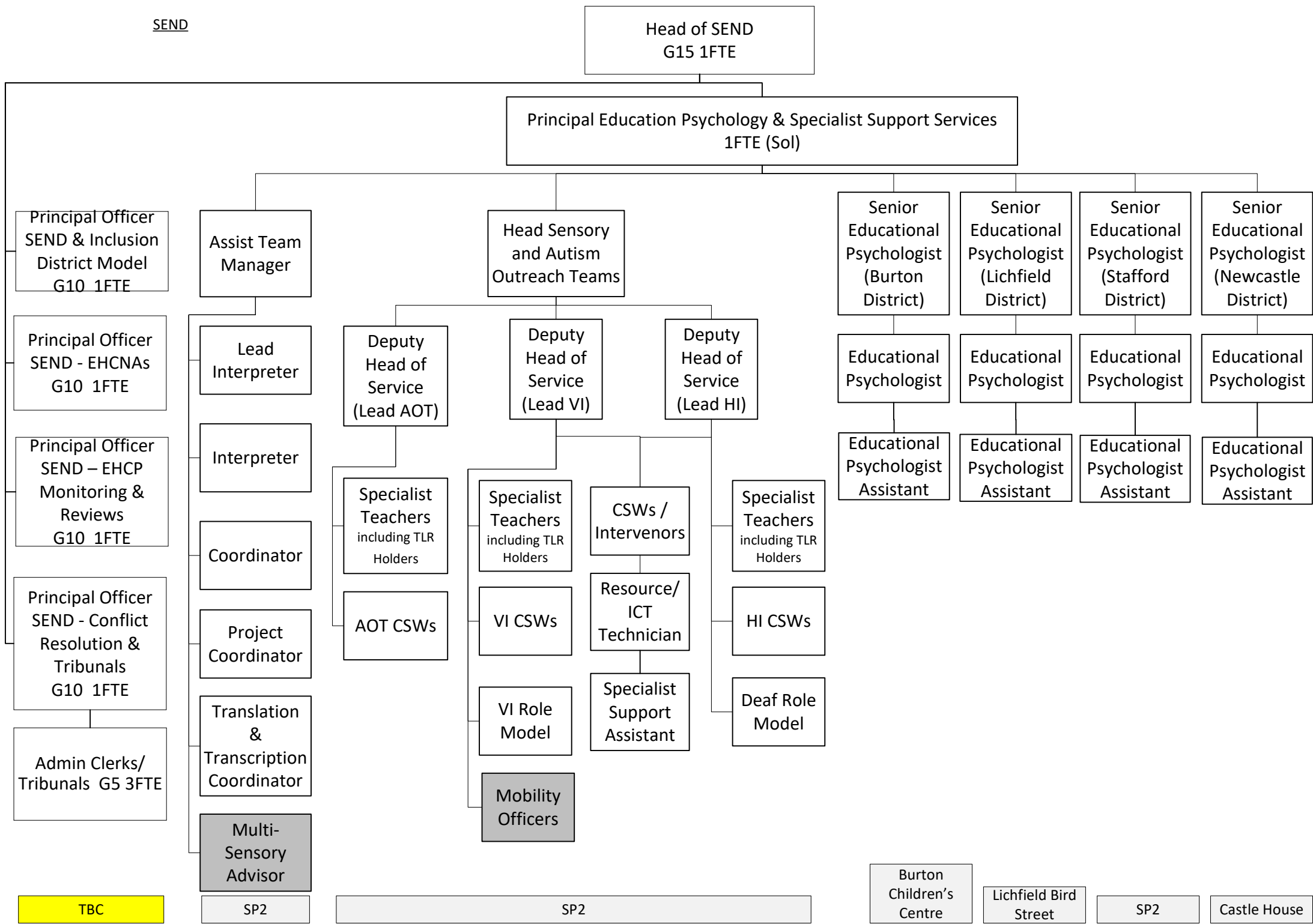
**Consultation &  
Engagement  
Assistant**  
G3 1FTE

**Intelligence &  
Analysis Assistant  
(12M FTC BRCF  
funded)**  
G6 1FTE

**Data Assistant**  
G5 0.5FTE

**Business Planning  
Policy & Procedures  
Officer**  
G8 1FTE





TBC

SP2

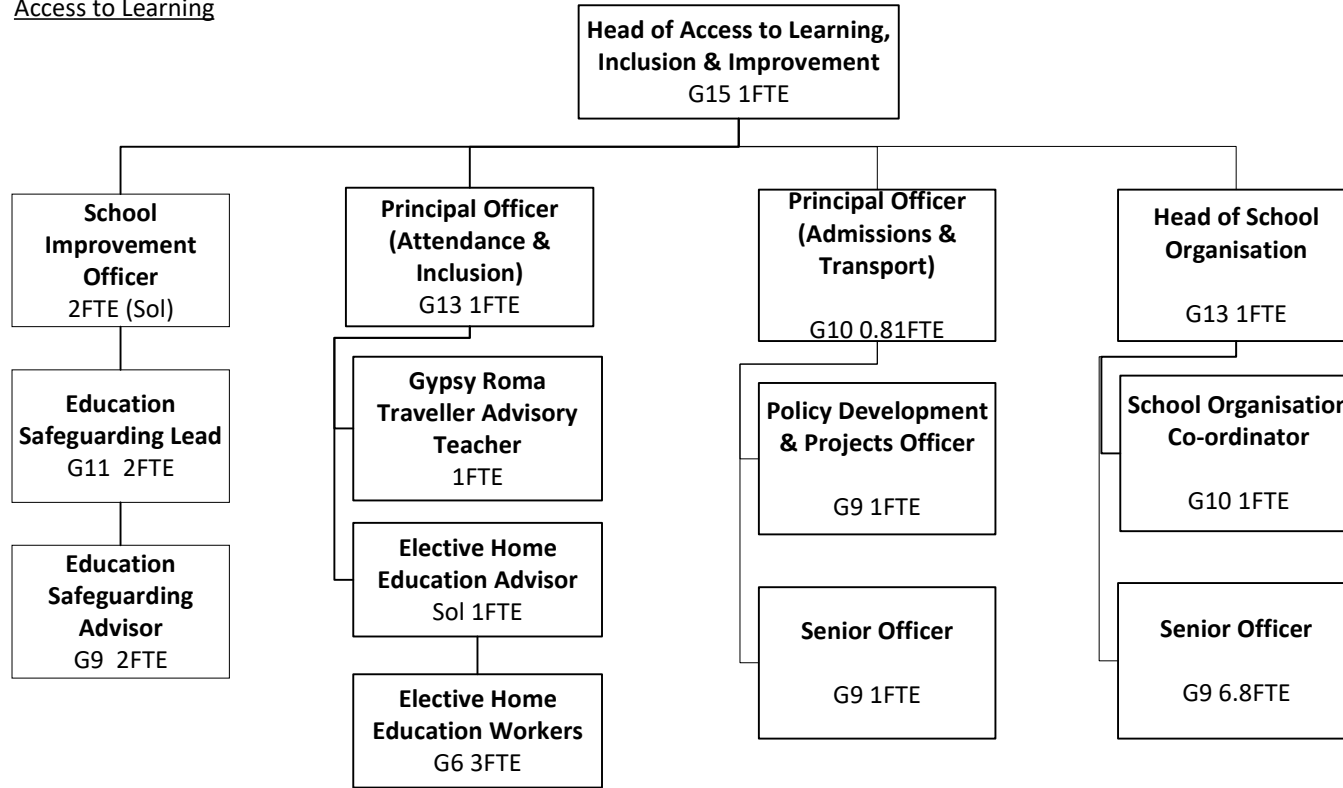
SP2

Burton Children's Centre

Lichfield Bird Street

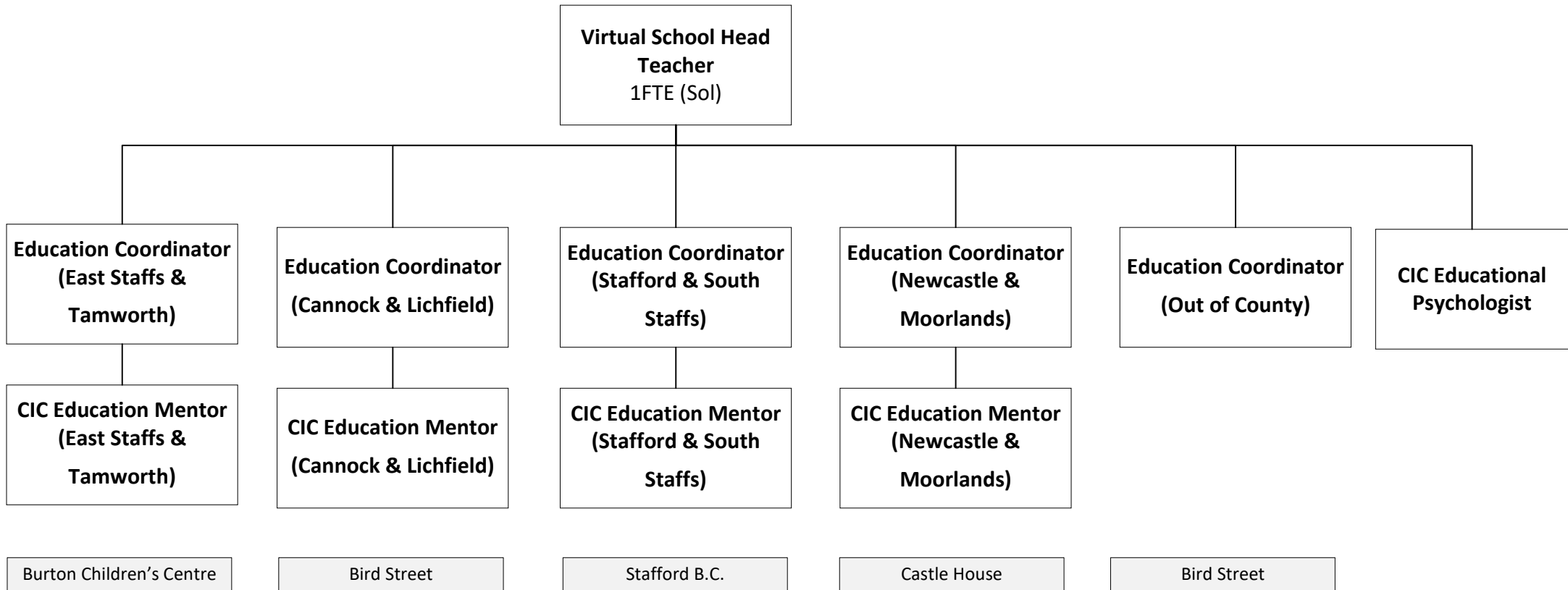
SP2

Castle House

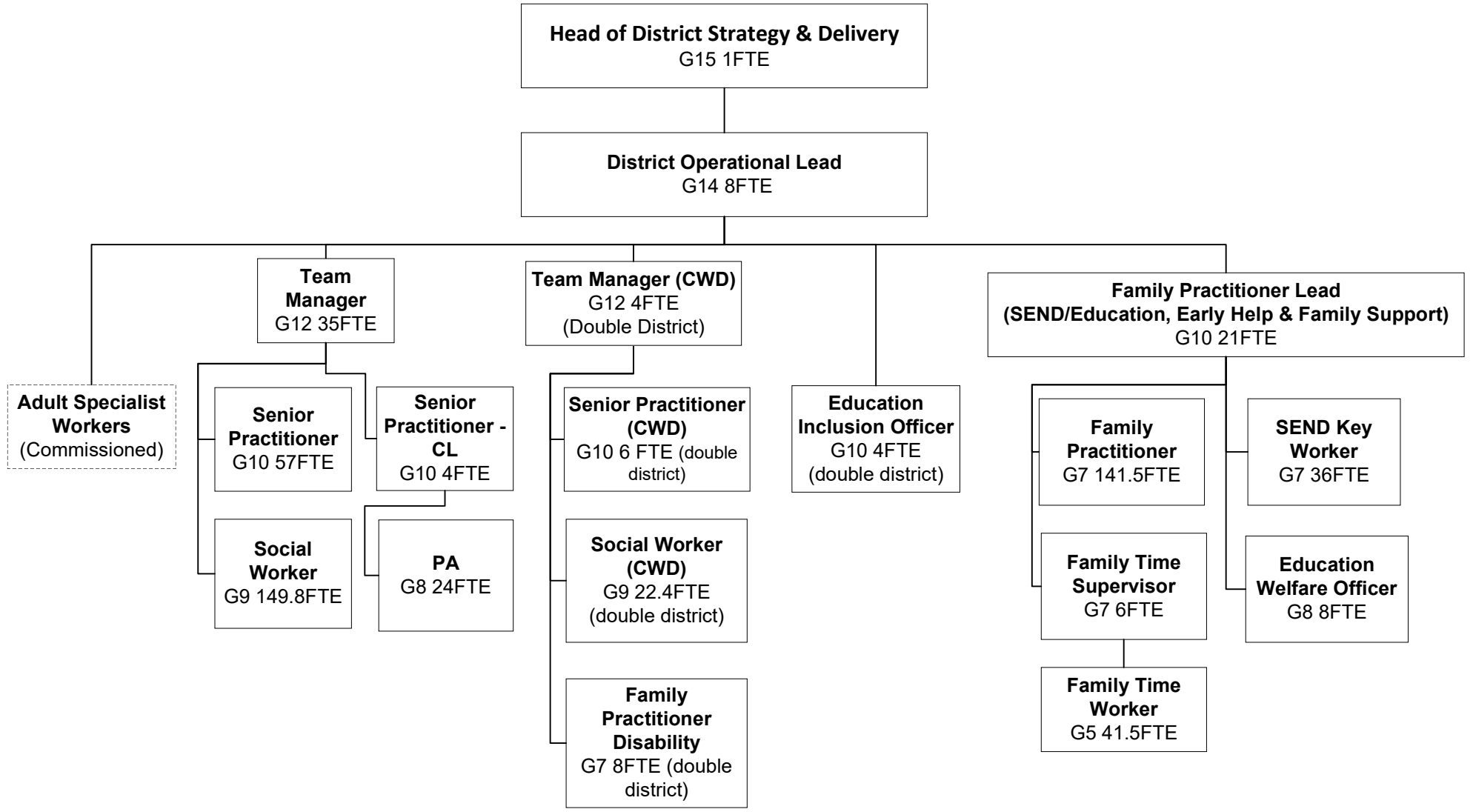


SP1

Virtual School



District Footprint

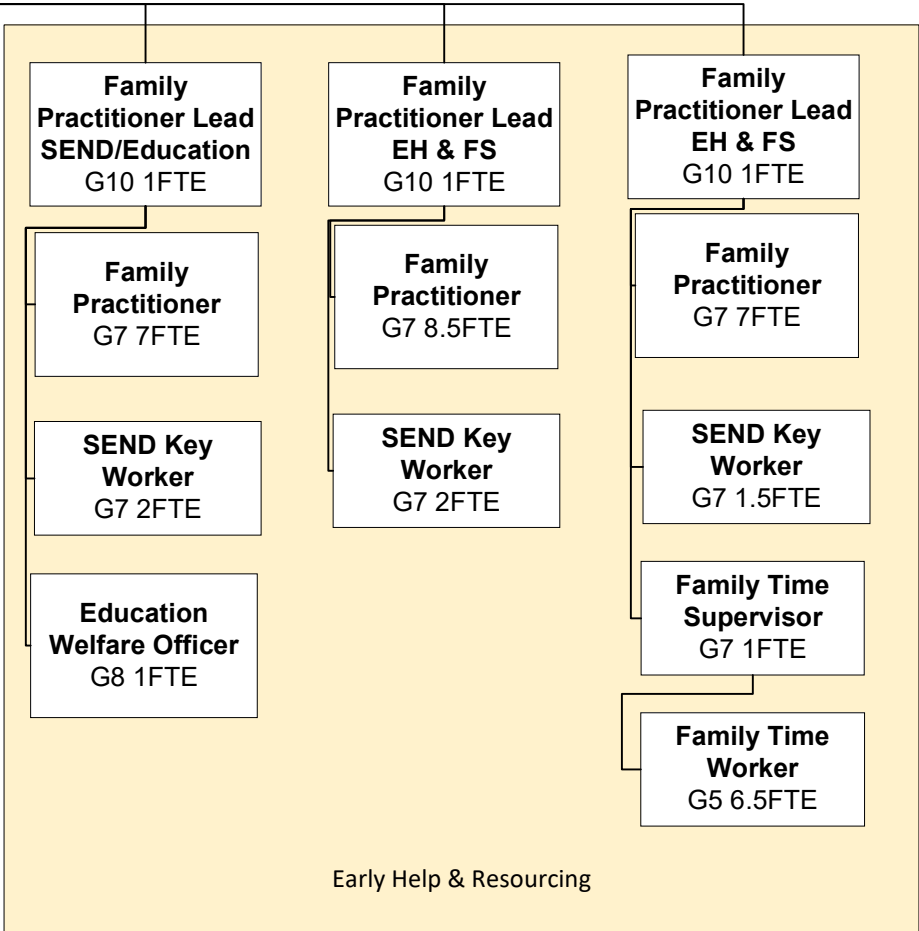
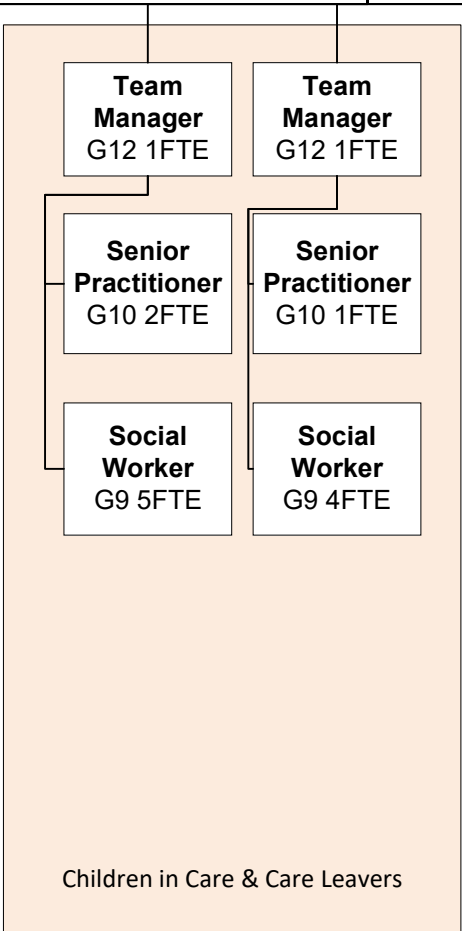
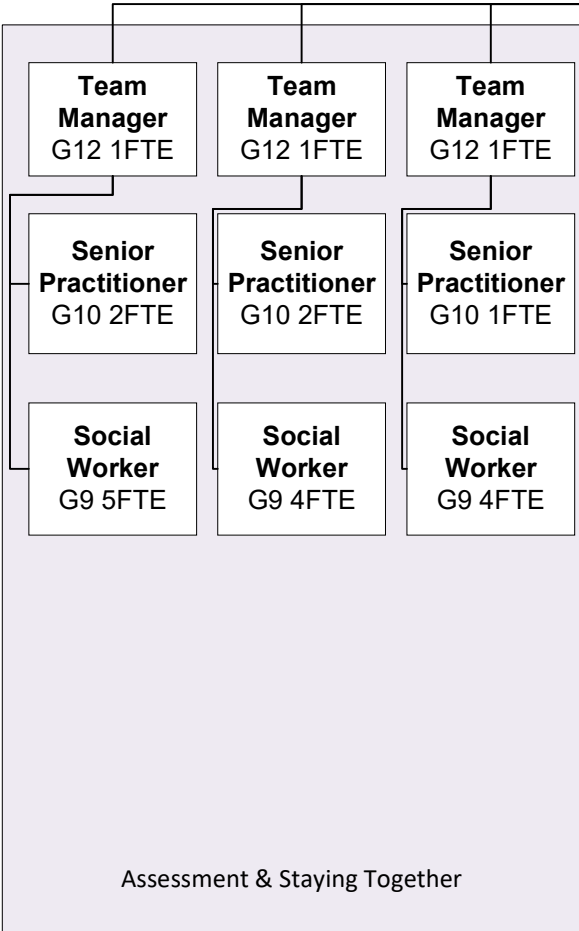


District Footprint  
Cannock

Head of District Strategy & Delivery

Adult Specialist  
Workers  
(Commissioned)

District Operational Lead  
8FTE



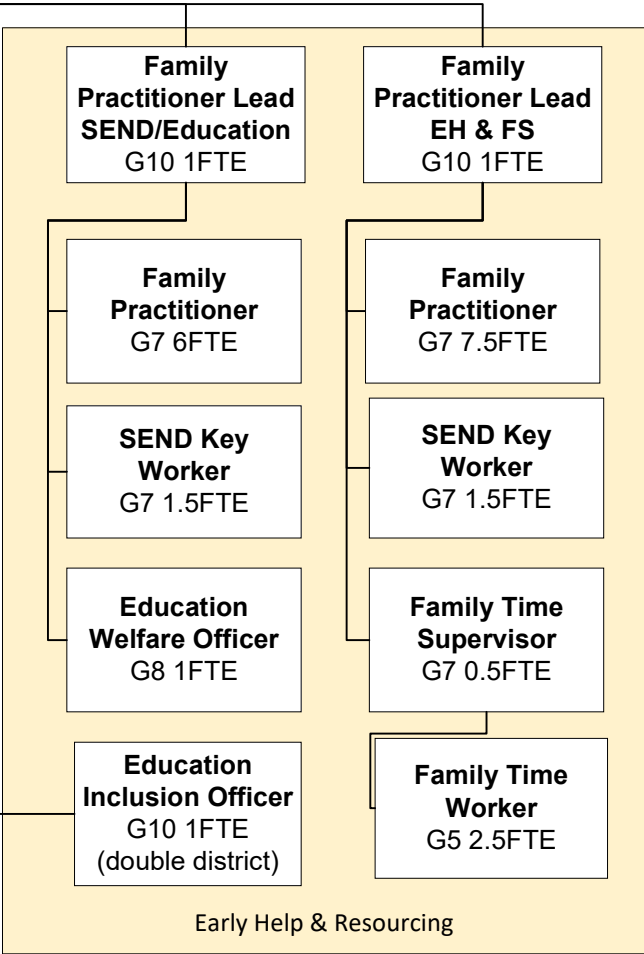
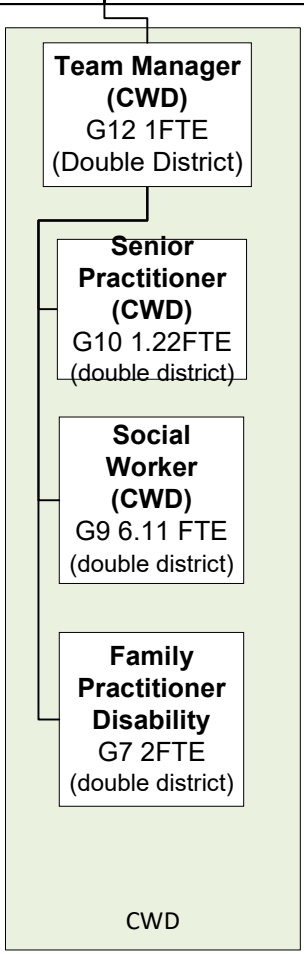
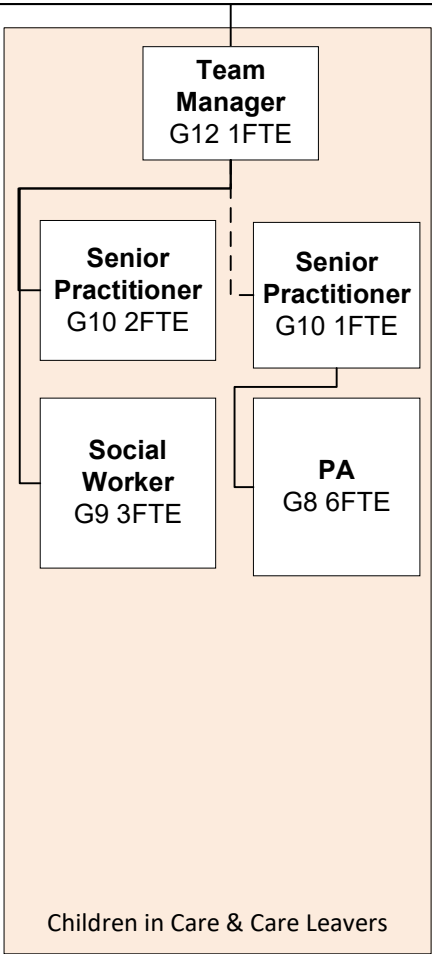
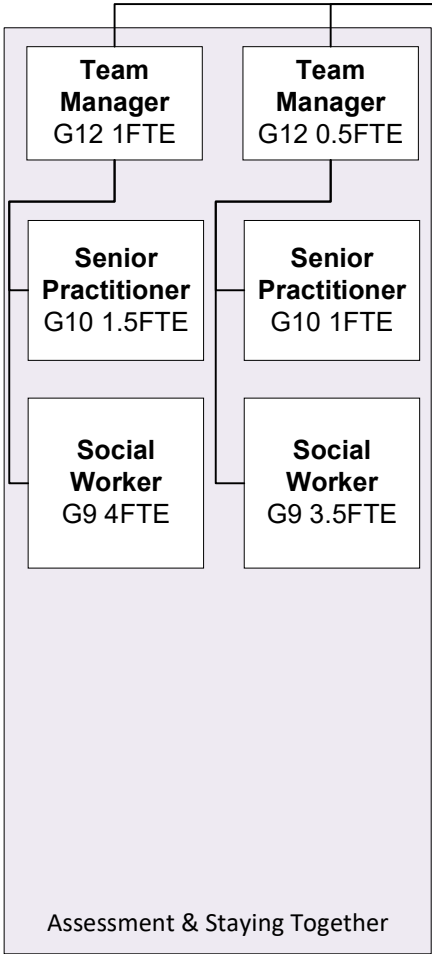
Springvale

District Footprint  
South Staffs

**Head of District Strategy and Delivery**

**Adult Specialist  
Workers**  
(Commissioned)

**District Operational Lead**  
8FTE



South Staffs B.C.

Stafford B.C.

Stafford B.C.

South Staffs B.C.

Head of District Strategy and Delivery

Adult Specialist  
Workers  
(Commissioned)

District Operational Lead  
1FTE

Team Manager  
G12 1FTE

Team Manager  
G12 1FTE

Team Manager  
G12 1FTE

Team Manager  
G12 1FTE

Team Manager  
G12 1FTE

Family Practitioner Lead  
SEND/Education  
G10 1FTE

Family Practitioner Lead  
EH & FS  
G10 1FTE

Family Practitioner Lead  
EH & FS  
G10 1FTE

Senior Practitioner  
G10 2FTE

Senior Practitioner  
G10 2FTE

Senior Practitioner  
G10 1FTE

Senior Practitioner  
G10 2FTE

Senior Practitioner  
G10 1.5FTE

Family Practitioner  
G7 6.5FTE

Family Practitioner  
G7 7FTE

Family Practitioner  
G7 7FTE

Social Worker  
G9 4.5FTE

Social Worker  
G9 4.5FTE

Social Worker  
G9 4.5FTE

Social Worker  
G9 4.5FTE

Social Worker  
G9 4.5FTE

SEND Key Worker  
G7 2FTE

SEND Key Worker  
G7 2FTE

SEND Key Worker  
G7 1FTE

Education Welfare Officer  
G8 1FTE

Family Time Supervisor  
G7 1FTE

Family Time Worker  
G5 6FTE

Assessment & Staying Together

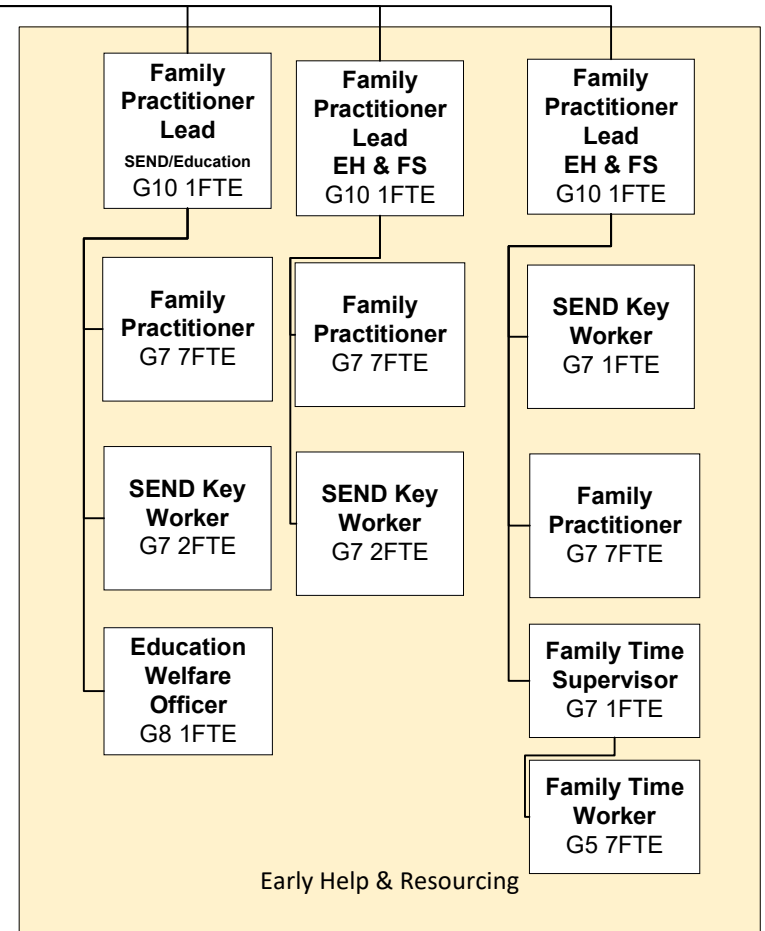
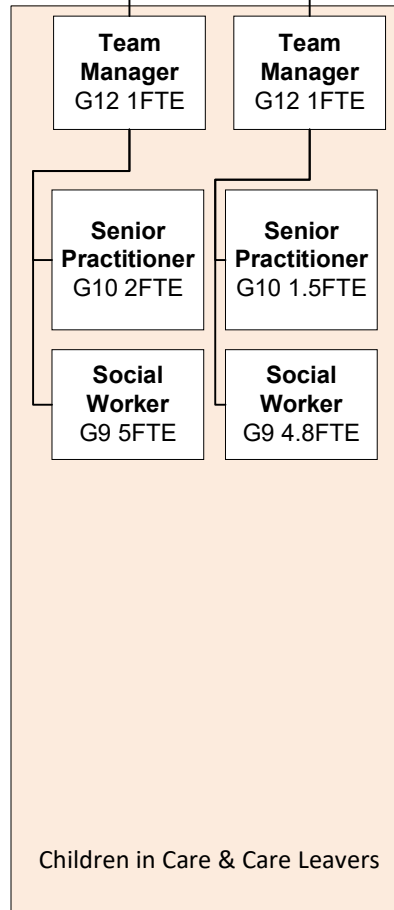
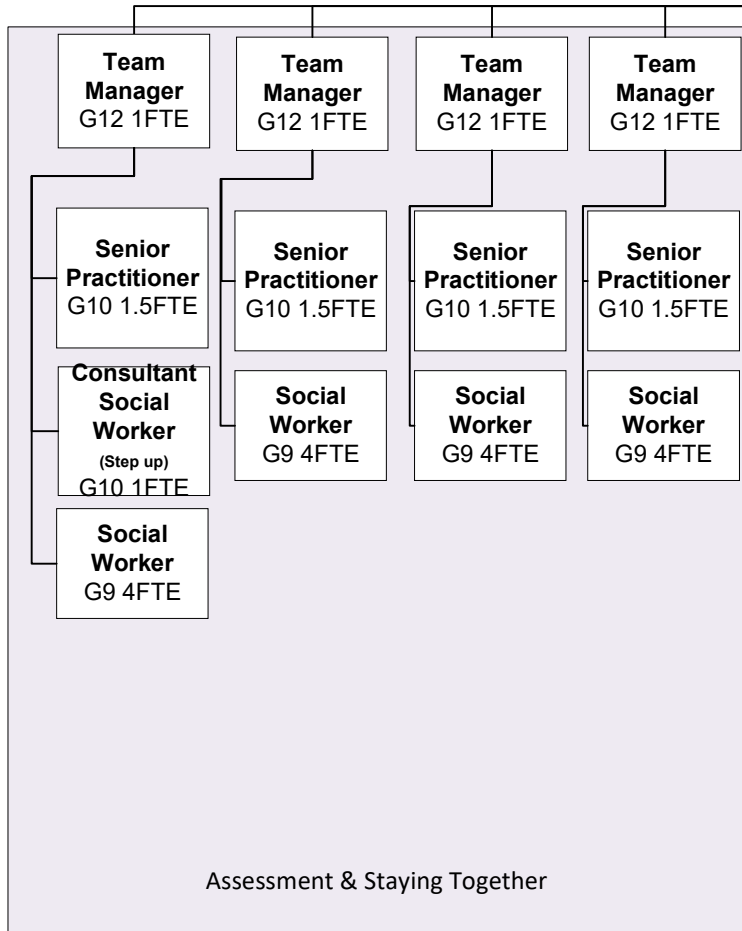
Children in Care & Care Leavers

Early Help & Resourcing

Head of District Strategy and Delivery

Adult Specialist  
Workers  
(Commissioned)

District Operational Lead  
1FTE



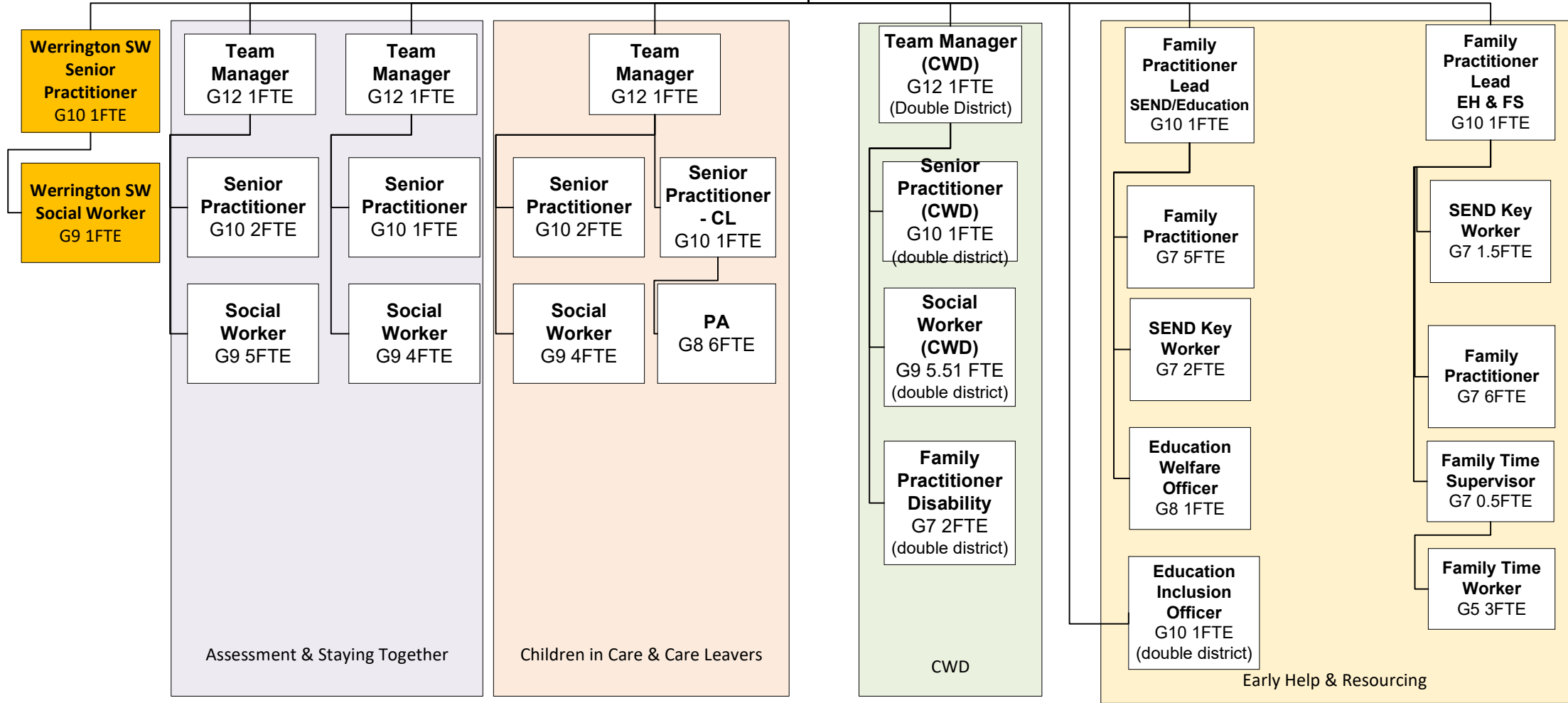


District Footprint  
Moorlands

**Adult Specialist Workers**  
(Commissioned)

**Head of District Strategy and Delivery**

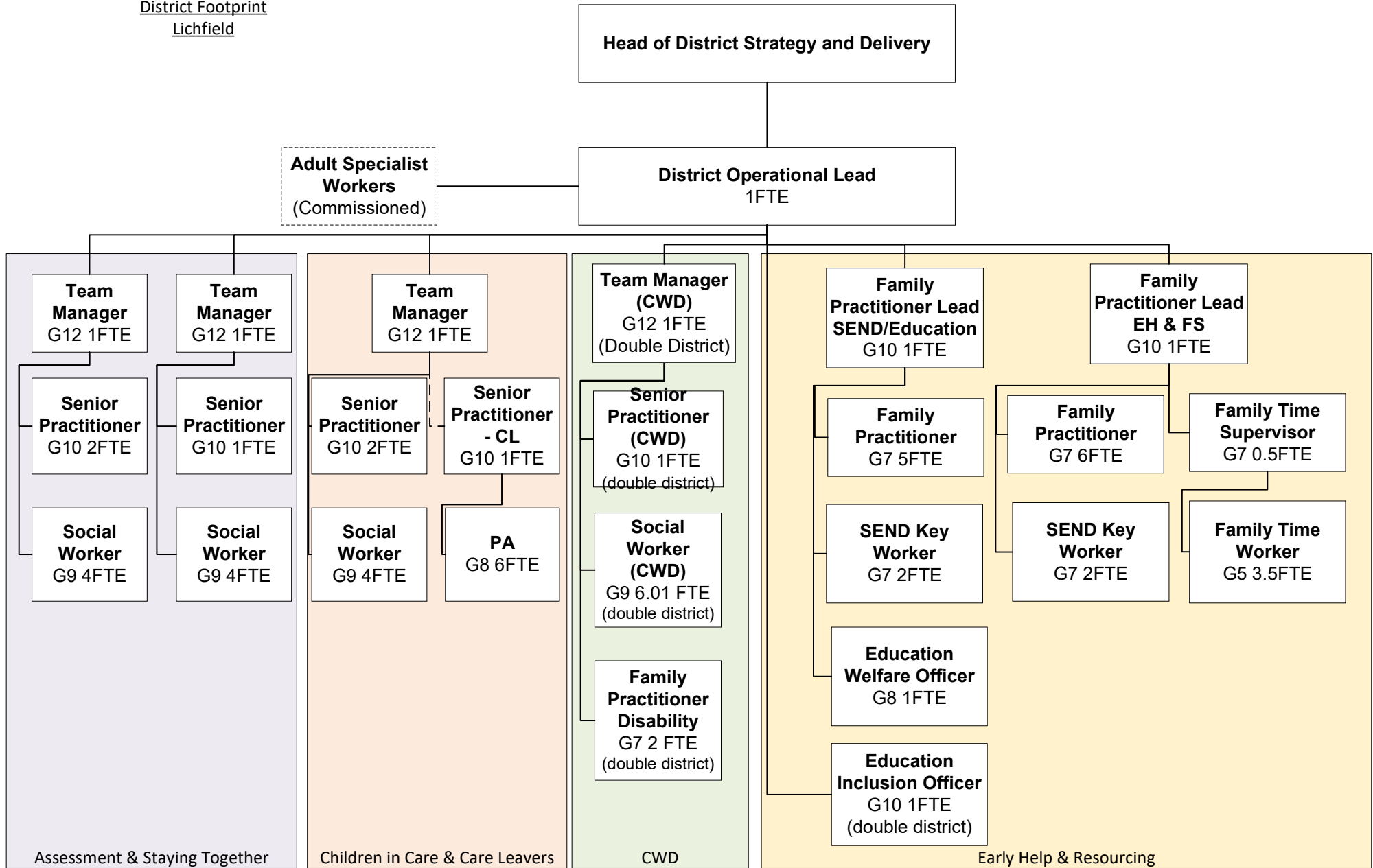
**District Operational Lead**  
1FTE



Biddulph Town Hall  
Assessment & Staying Together x1 (approx 7.5 FTE)  
Family Practitioners 1.5 (approx 16.5 FTE)  
EIO (1 FTE)

Moorlands House  
Assessment & Staying Together team x 1 (approx 7.5 FTE)  
Children in Care and Care Leavers x 1 (approx 7.5)  
Family Practitioners x 1 (approx 11.5 FTE)  
EPDO (1FTE)

Castle House  
CWD & PAs



The Old House

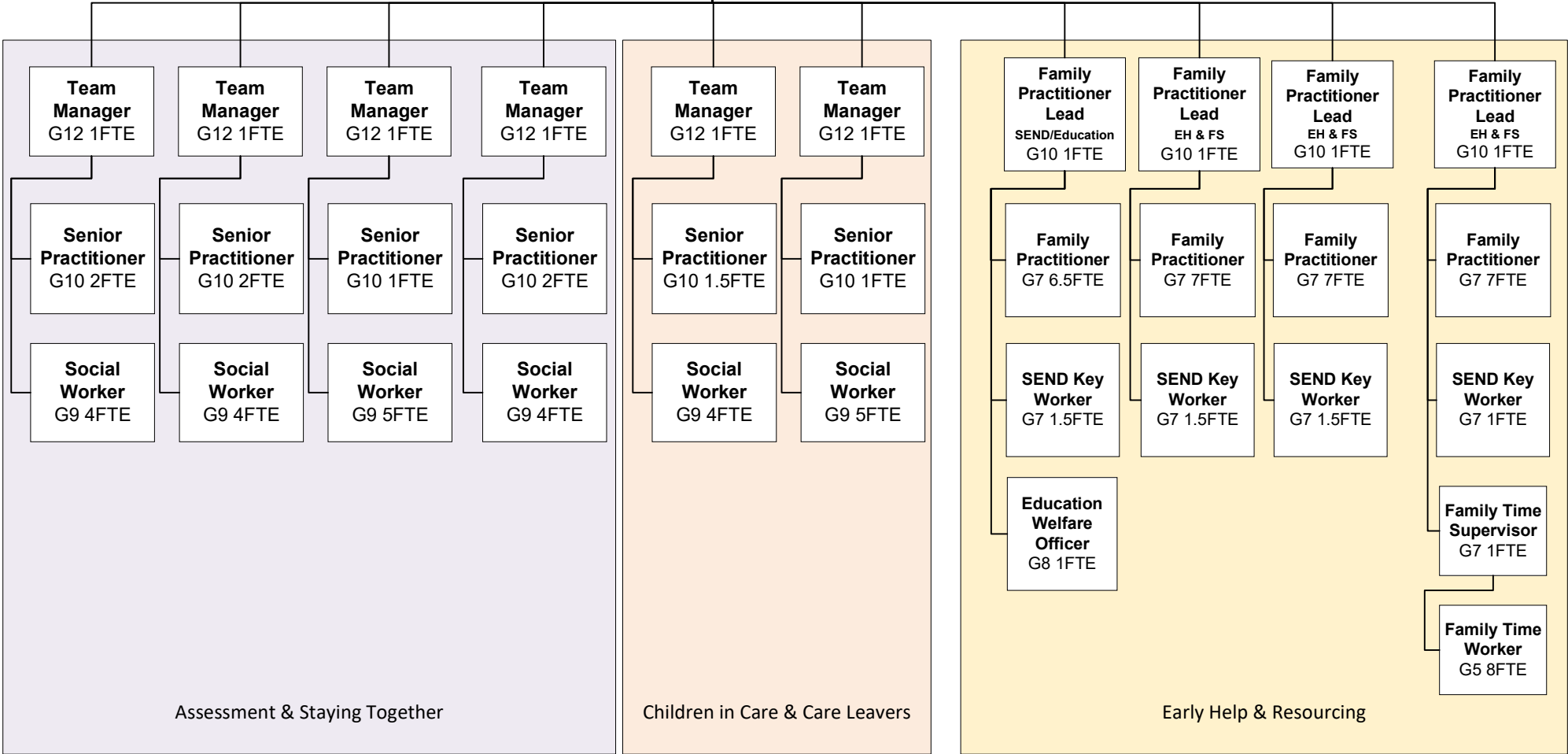
Cannock Chase D.C  
CWD

Bird Street  
PAs

Head of District Strategy and Delivery

Adult Specialist  
Workers  
(Commissioned)

District Operational Lead  
1FTE



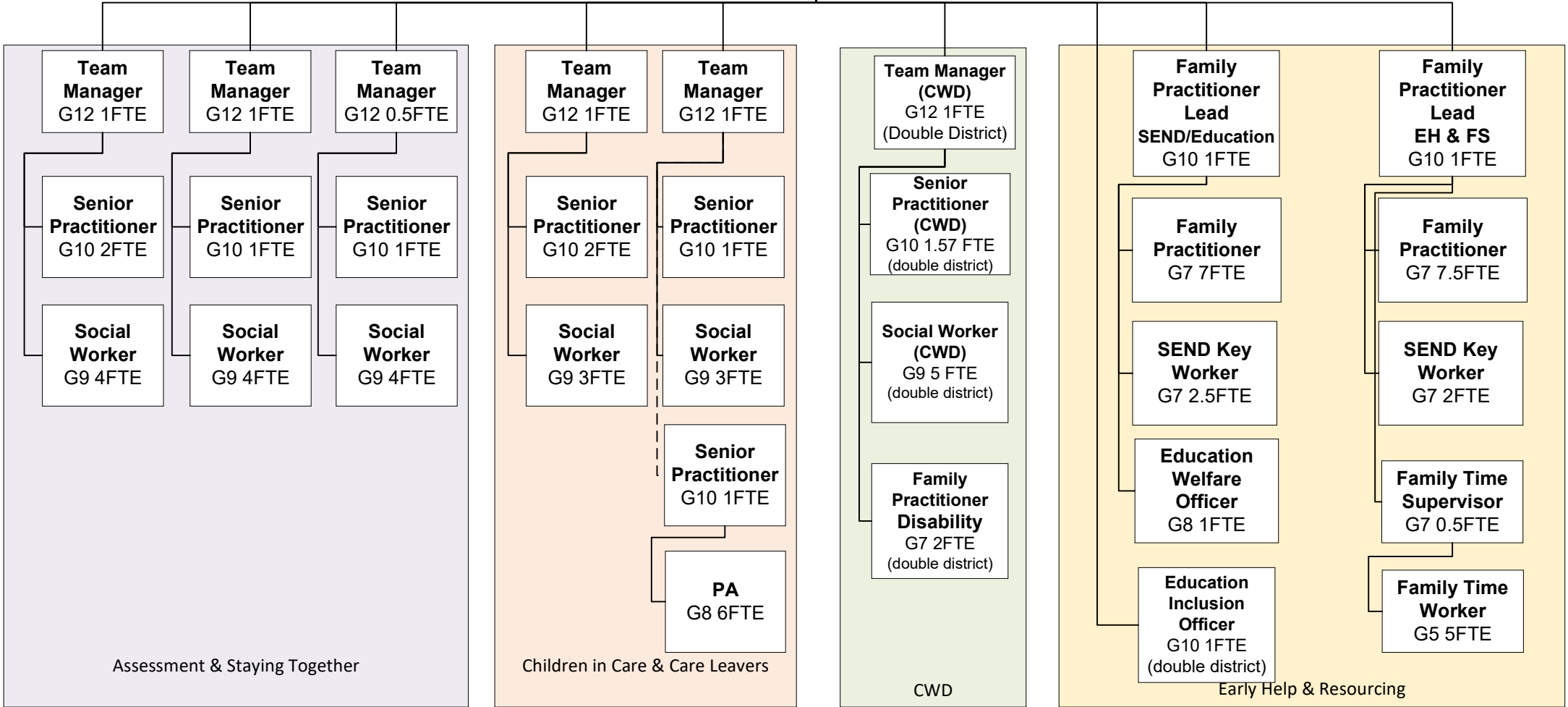
The Grange

Hot Desks at Burton Children's Centre & Red Gables

**Head of District Strategy and Delivery**

**Adult Specialist  
Workers**  
(Commissioned)

**District Operational Lead**  
1FTE



Marmion House

East Staffs Children's Centre  
CWD

The Grange  
PAs

Business Support District

Business Support Manager  
(Double District)  
G10 4FTE

Business Support Team  
Leader  
G7 8FTE

Business Support  
Assistant Team Leader  
6FTE G6

Business Support  
Officer (PA to Social  
Worker)  
41FTE G5

Business Support  
Officer (Statutory  
Services)  
25FTE G5

Business Support  
Assistant (Practitioner  
Team)  
42.2FTE G3

Business Support  
Administrator  
12FTE G4

Business Support  
Assistant (Customer  
Services)  
8.5FTE G3

Customer Services  
Officer  
5FTE G4

Supporting:  
Staying Together  
CIC & CL  
CWD

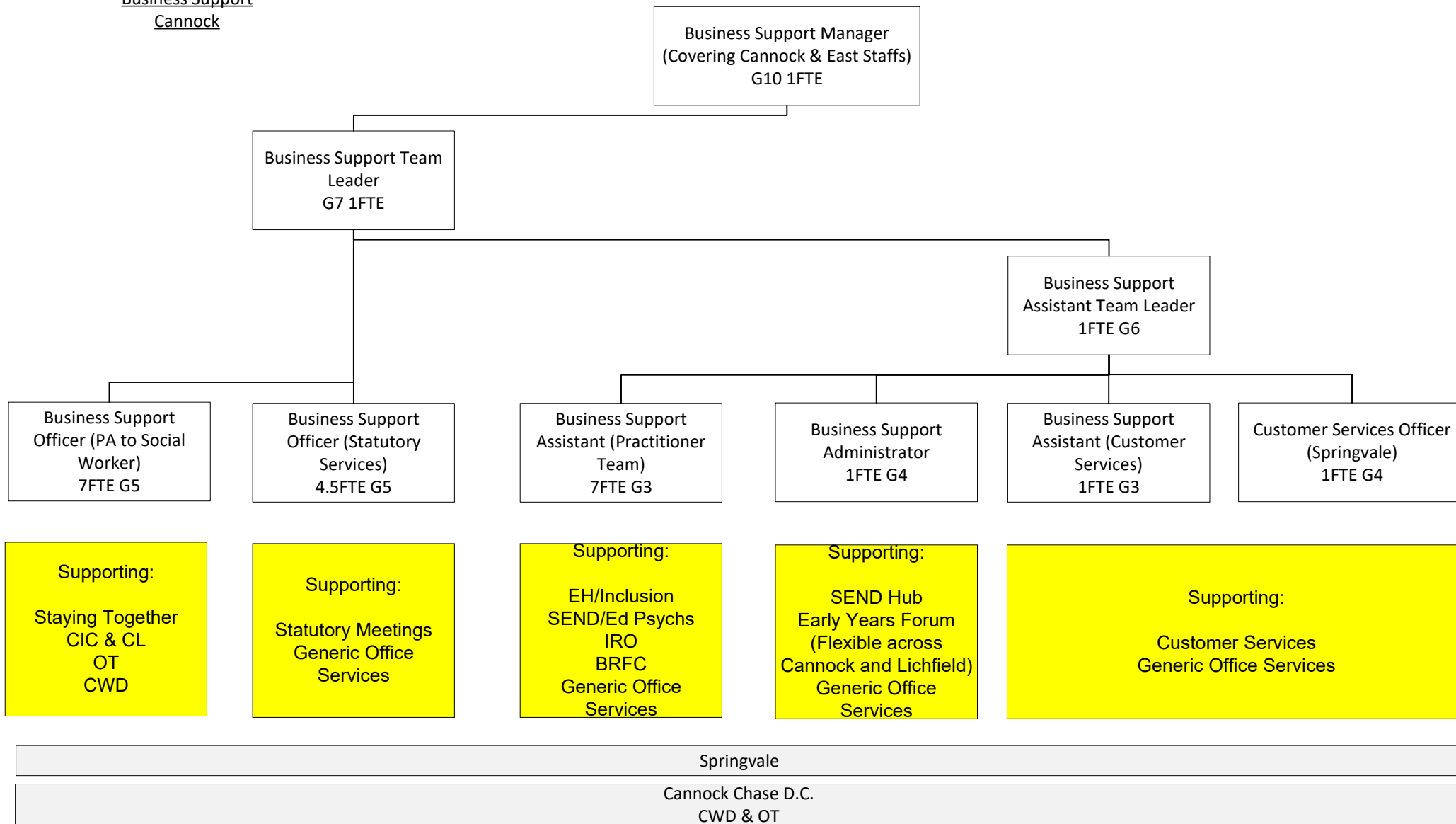
Supporting:  
Statutory Meetings  
Generic Office  
Services

Supporting:  
EH/Inclusion  
SEND/Ed Psychs  
IRO  
BRFC  
Generic Office  
Services

Supporting:  
SEND Hub  
Early Years Forum  
Generic Office  
Services

Supporting:  
Customer Services  
Generic Office Services

Business Support  
Cannock



Supporting:  
Staying Together  
CIC & CL  
OT  
CWD

Supporting:  
Statutory Meetings  
Generic Office Services

Supporting:  
EH/Inclusion  
SEND/Ed Psychs  
IRO  
BRFC  
Generic Office Services

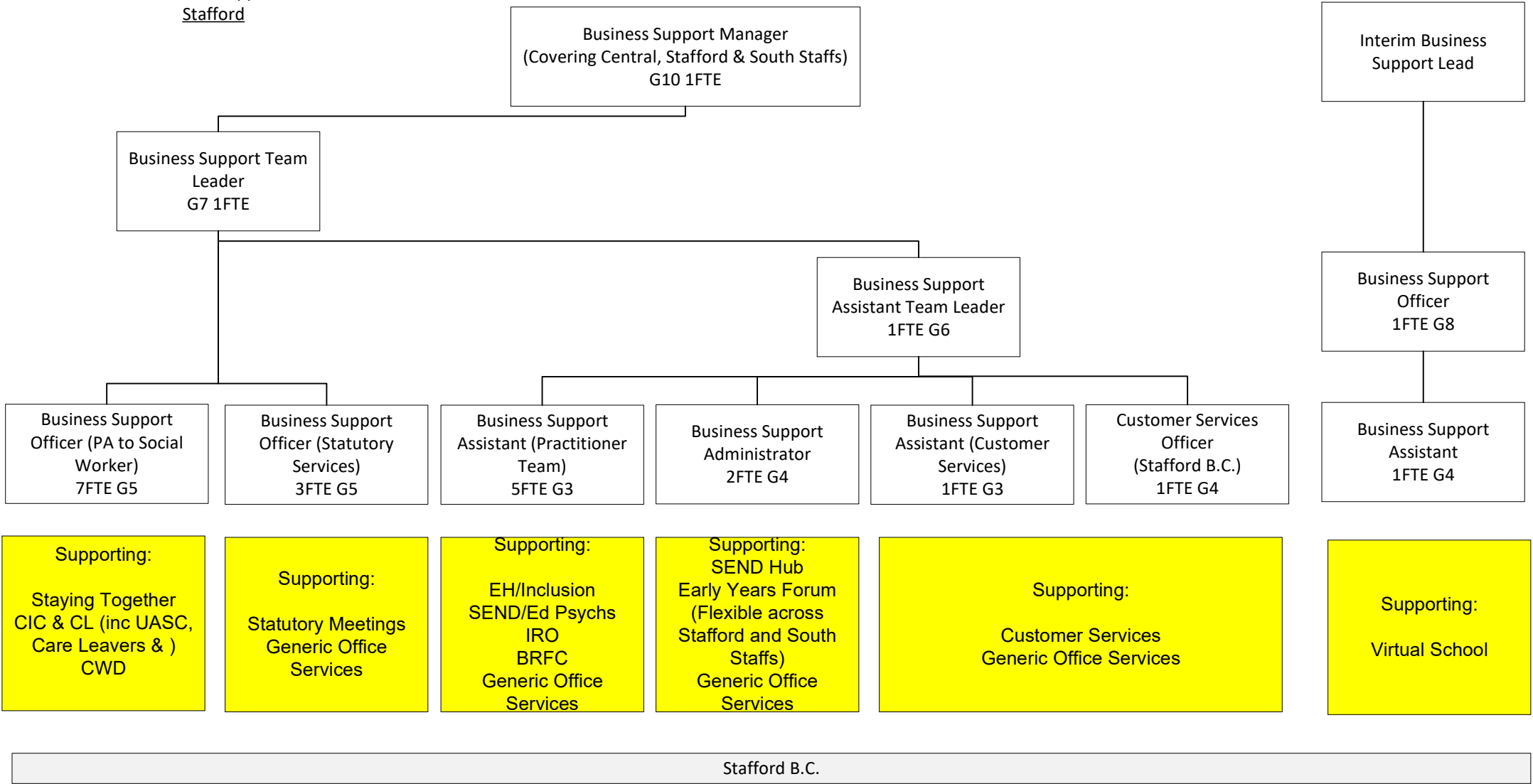
Supporting:  
SEND Hub  
Early Years Forum  
(Flexible across  
Cannock and Lichfield)  
Generic Office Services

Supporting:  
Customer Services  
Generic Office Services

Springvale

Cannock Chase D.C.  
CWD & OT

Business Support  
Stafford



Stafford B.C.

Business Support  
Newcastle

Business Support Manager  
(Covering Newcastle & Moorlands)  
G10 1FTE

Business Support Team  
Leader  
G7 1FTE

*Team Leader Futures  
Matters  
(See Lichfield B.S.  
Structure)*

Business Support  
Assistant Team Leader  
1FTE G6

Business Support  
Officer (PA to Social  
Worker)  
7FTE G5

Business Support  
Officer (Statutory  
Services)  
4FTE G5

Business Support  
Assistant (Practitioner  
Team)  
7FTE G3

Business Support  
Administrator  
2FTE G4

Business Support  
Assistant (Customer  
Services)  
1.5FTE G3

Customer Services  
Officer  
(Castle House)  
1FTE G4

Business Support  
Officer (PA to Social  
Worker)  
G5 1.5FTE

Business Support  
Assistant (Practitioner  
Team)  
G3 0.59FTE

Supporting:  
Staying Together  
CIC & CL  
CWD

Supporting:  
Statutory Meetings  
Generic Office  
Services

Supporting:  
EH/Inclusion  
SEND/Ed Psychs  
IRO  
BRFC  
Generic Office  
Services

Supporting:  
SEND Hub  
Early Years Forum  
(Flexible across  
Newcastle and  
Moorlands)  
Generic Office  
Services

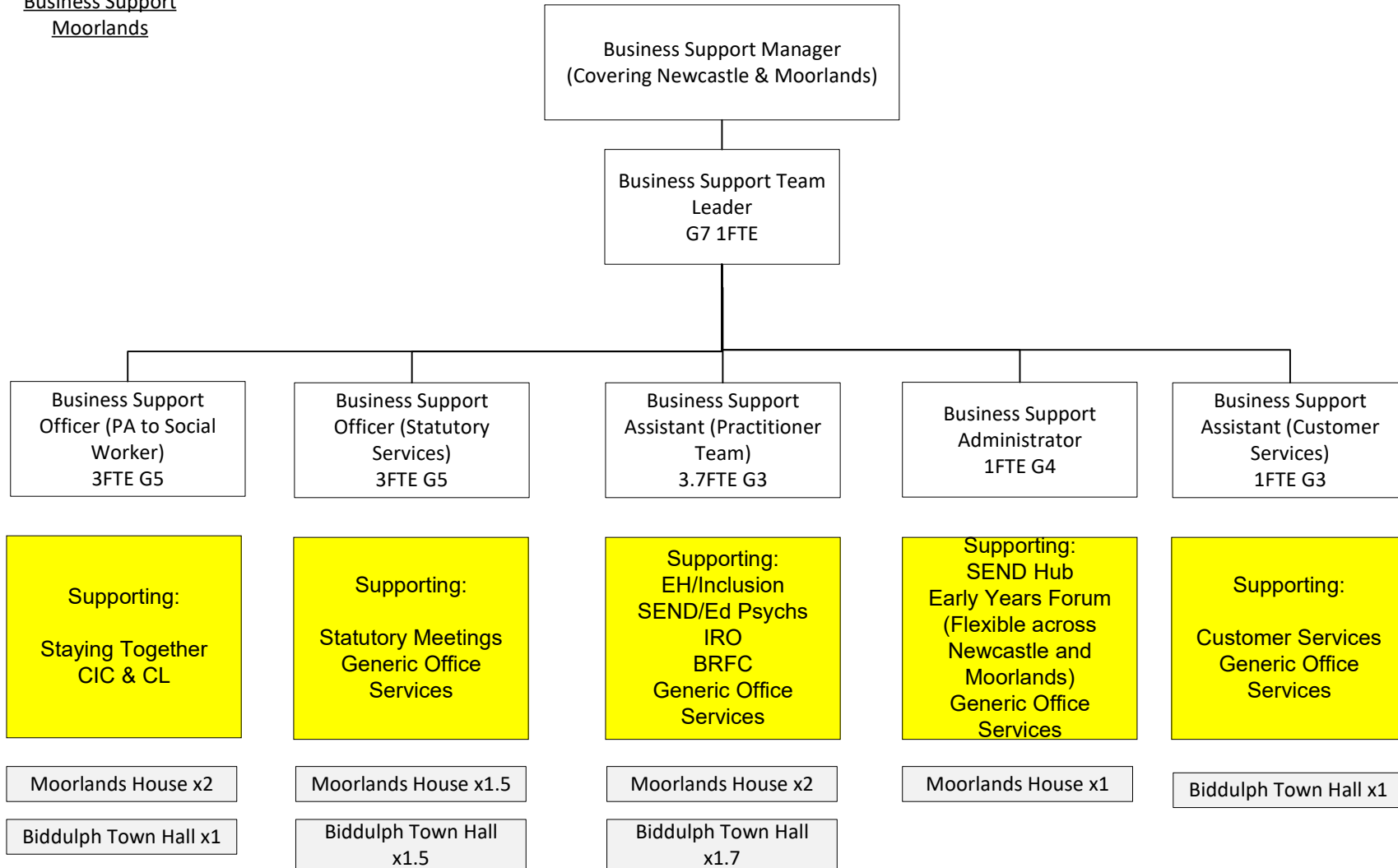
Supporting:  
Customer Services  
Generic Office Services

Supporting:  
Futures Matters

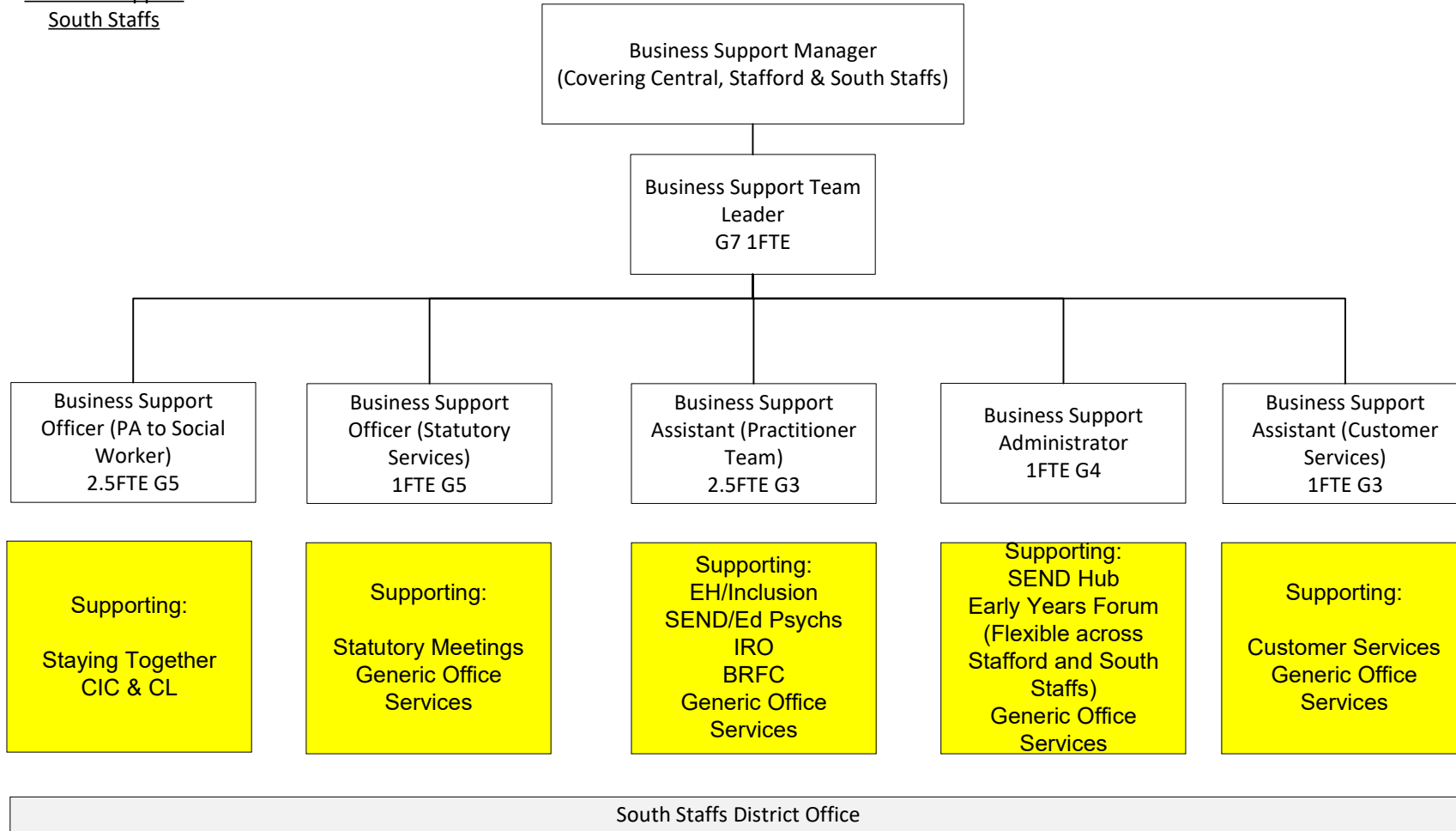
Castle House



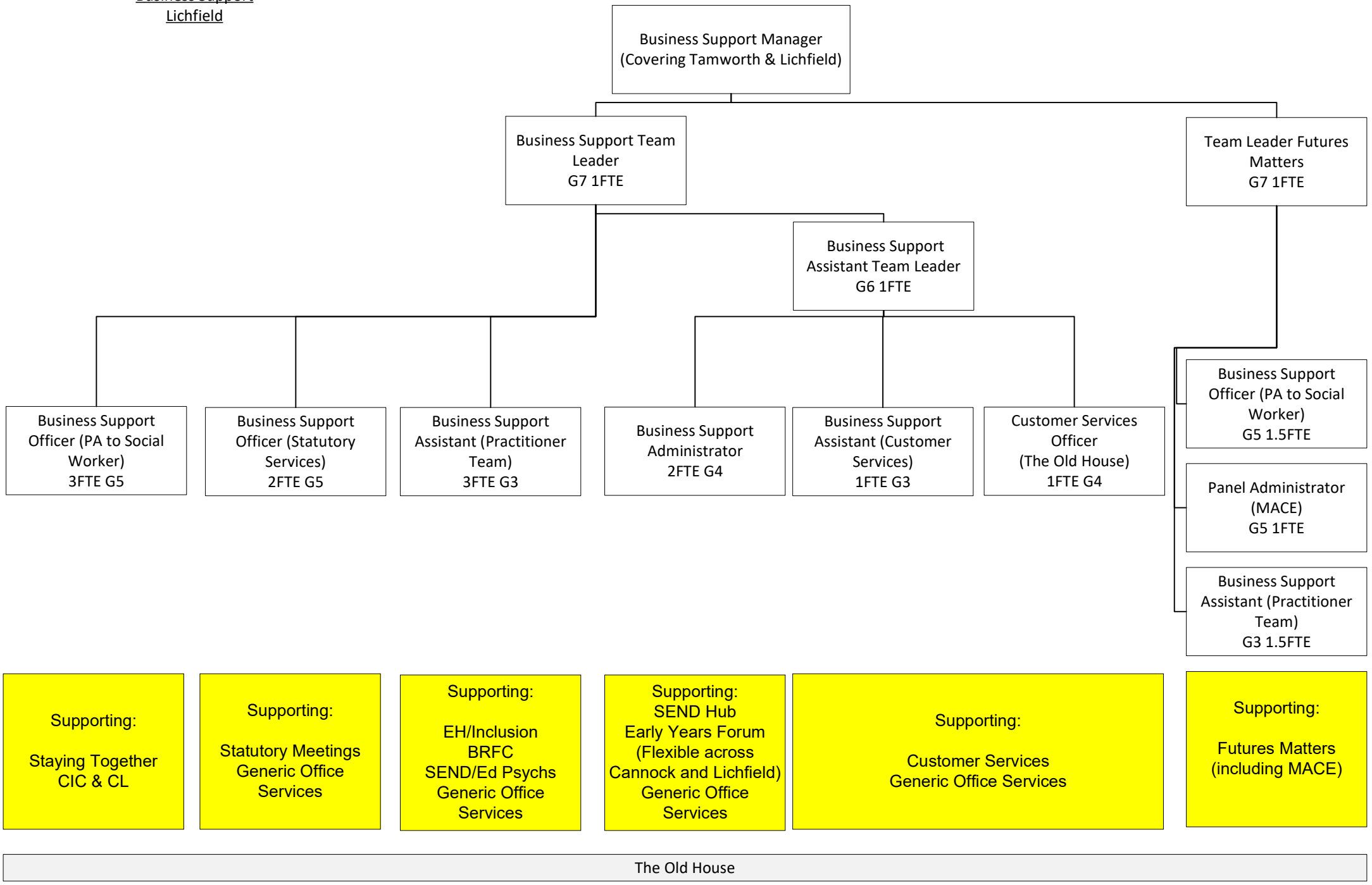
Business Support  
Moorlands



Business Support  
South Staffs



Business Support  
Lichfield



Business Support  
East Staffs

Business Support Manager  
(Covering Cannock & East Staffs)

Business Support Team  
Leader  
G7 1FTE

Business Support  
Assistant Team Leader  
1FTE G6

Business Support  
Officer (PA to Social  
Worker)  
7FTE G5

Business Support  
Officer (Statutory  
Services)  
4FTE G5

Business Support  
Assistant (Practitioner  
Team)  
7.5FTE G3

Business Support  
Administrator  
2FTE G4

Business Support  
Assistant (Customer  
Services)  
1FTE G3

Customer Services  
Officer  
(Grange Street)  
1FTE G4

Supporting:  
Staying Together  
CIC & CL  
CWD

Supporting:  
Statutory Meetings  
Generic Office  
Services

Supporting:  
EH/Inclusion  
SEND/Ed Psychs  
IRO  
BRFC  
Generic Office  
Services

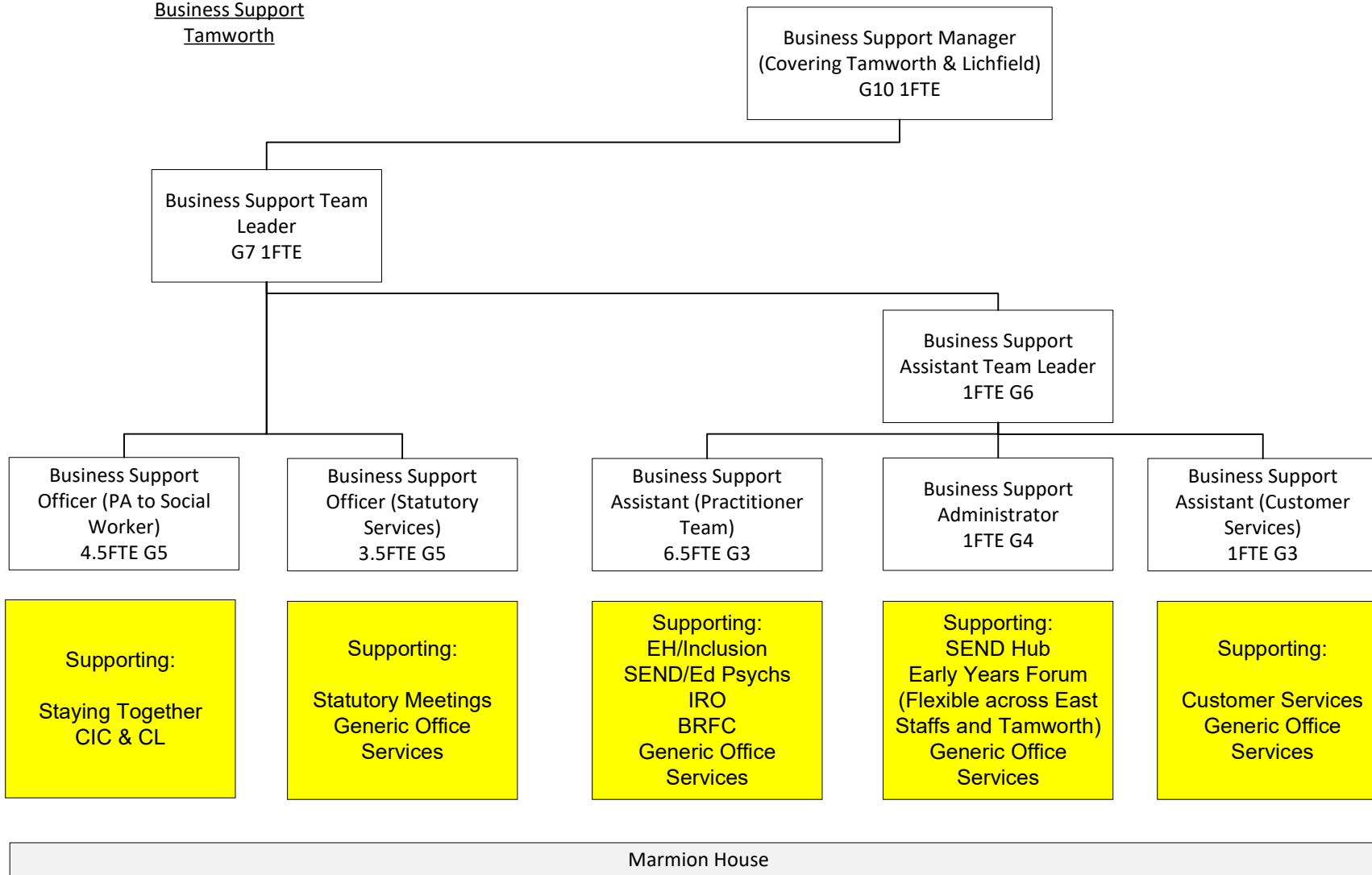
Supporting:  
SEND Hub  
Early Years Forum  
(Flexible across East  
Staffs and Tamworth)  
Generic Office  
Services

Supporting:  
Customer Services  
Generic Office Services

The Grange

Hot Desks at Burton Children's Centre & Red Gables

Business Support  
Tamworth



Business Support Manager  
(Covering Tamworth & Lichfield)  
G10 1FTE

Business Support Team  
Leader  
G7 1FTE

Business Support  
Assistant Team Leader  
1FTE G6

Business Support  
Officer (PA to Social  
Worker)  
4.5FTE G5

Business Support  
Officer (Statutory  
Services)  
3.5FTE G5

Business Support  
Assistant (Practitioner  
Team)  
6.5FTE G3

Business Support  
Administrator  
1FTE G4

Business Support  
Assistant (Customer  
Services)  
1FTE G3

Supporting:  
Staying Together  
CIC & CL

Supporting:  
Statutory Meetings  
Generic Office  
Services

Supporting:  
EH/Inclusion  
SEND/Ed Psychs  
IRO  
BRFC  
Generic Office  
Services

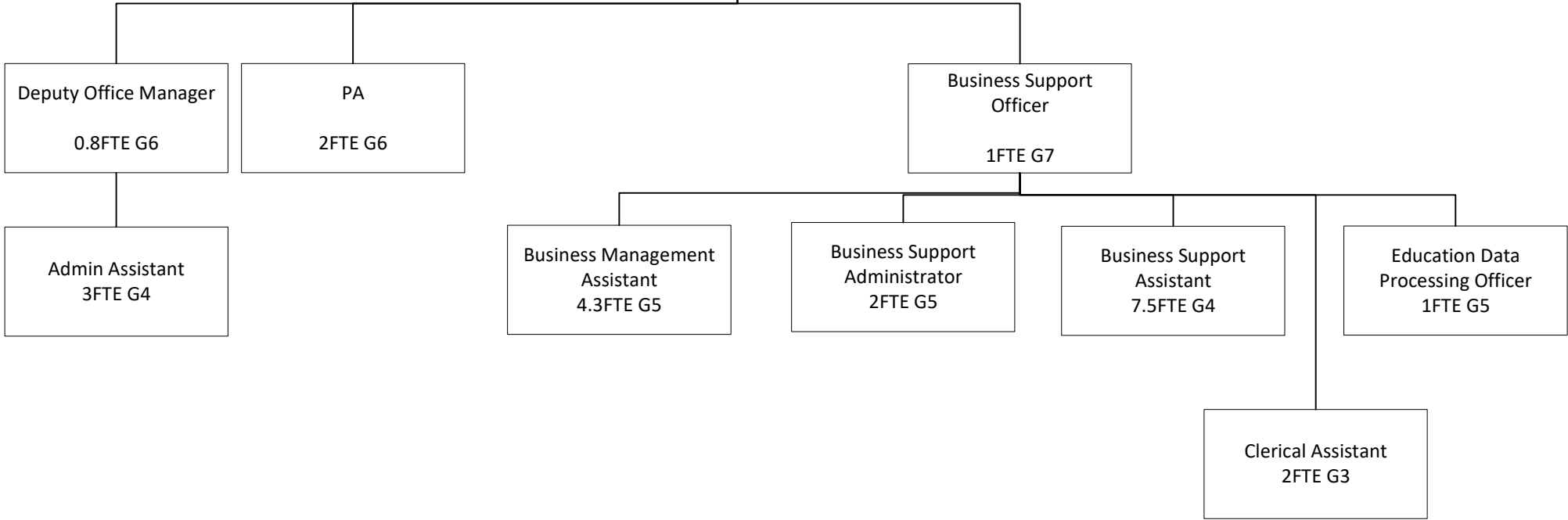
Supporting:  
SEND Hub  
Early Years Forum  
(Flexible across East  
Staffs and Tamworth)  
Generic Office  
Services

Supporting:  
Customer Services  
Generic Office  
Services

Marmion House

Business Support  
Central to moving to BEST

To be managed by  
existing resources in  
BEST



Supporting:  
Specialist Support  
Services (AOT /  
Visual / Hearing  
Impairment)

Supporting:  
Deputy Chief Exec of  
Children's Services  
Assistant Directors x3

Supporting:  
Heads of Service

Supporting:  
Supporting Strategic Safeguarding / Statutory Education / Access to Files &  
Litigation / FGC & Breathing Space / Futures Matters

Business Support  
Central Functions  
 (Children in Our Care & Care Leavers)

Business Support Manager  
 (Covering Central, Stafford & South Staffs)

Business Support Team  
 Leader  
 G7 1FTE

Business Support  
 Administrator  
 2FTE G4

Business Support Officer (PA to Social  
 Worker)  
 5.5FTE G5

Business Support Assistant (Practitioner  
 Team)  
 5.5FTE G3

Business Support Assistant  
 4.5FTE G3

Supporting:  
 Access to Services &  
 Family Support

Supporting:  
 Central Fostering & Foster Panel  
 x1FTE  
 Fostering Central – Engagement  
 x1FTE  
 Fostering Stability/Sufficiency /  
 Intensive Fostering & Short Breaks  
 x1FTE  
 Family & Friends x1.5FTE  
 Permanency & SGO x1FTE

Supporting:  
 Fostering Central – Engagement  
 x2.5FTE  
 Fostering Supervision & Support  
 North x1FTE  
 Fostering Supervision & Support  
 South & East x2FTE

Supporting:  
 Central Fostering & Foster  
 Panel

Stafford

Stafford

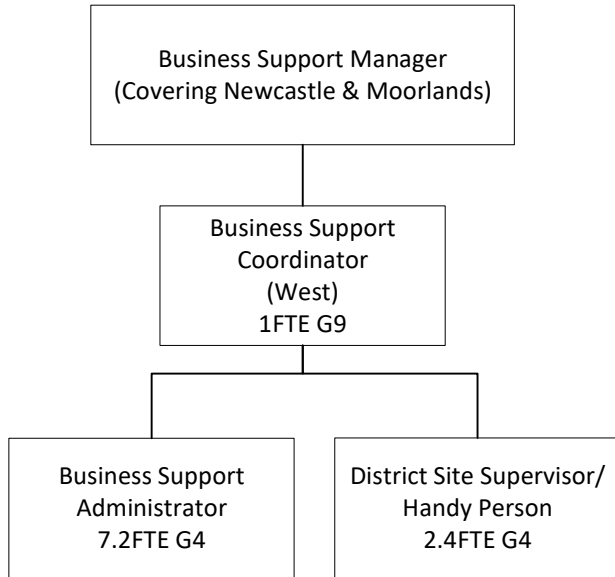
Stafford x3.5FTE

Lichfield x2FTE

Stafford

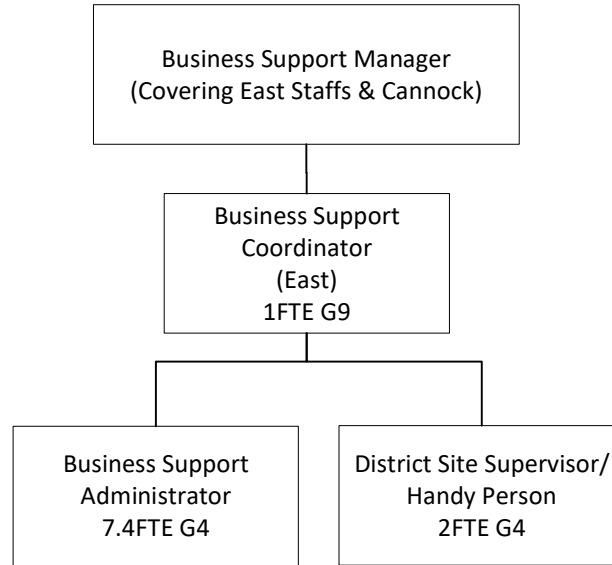
Business Support

Children's Centres (Out of Scope – To be reviewed in 12 months)



Supporting:

Biddulph Children's Centre  
Newcastle Children's Centre  
Stafford Faraday Road



Supporting:

Glascote Children's Centre  
Tamworth Basin Lane  
Burton Children's Centre  
Cannock Children's Centre